



Copyright 2006 Paragon Software (Smart Handheld Devices Division)

***Multilingual dictionary
Merriam-Webster 6.0 for Palm OS***

Dear Customer!
Thank you for using our software.
It is your interest that inspires us to develop innovative solutions for mobile devices

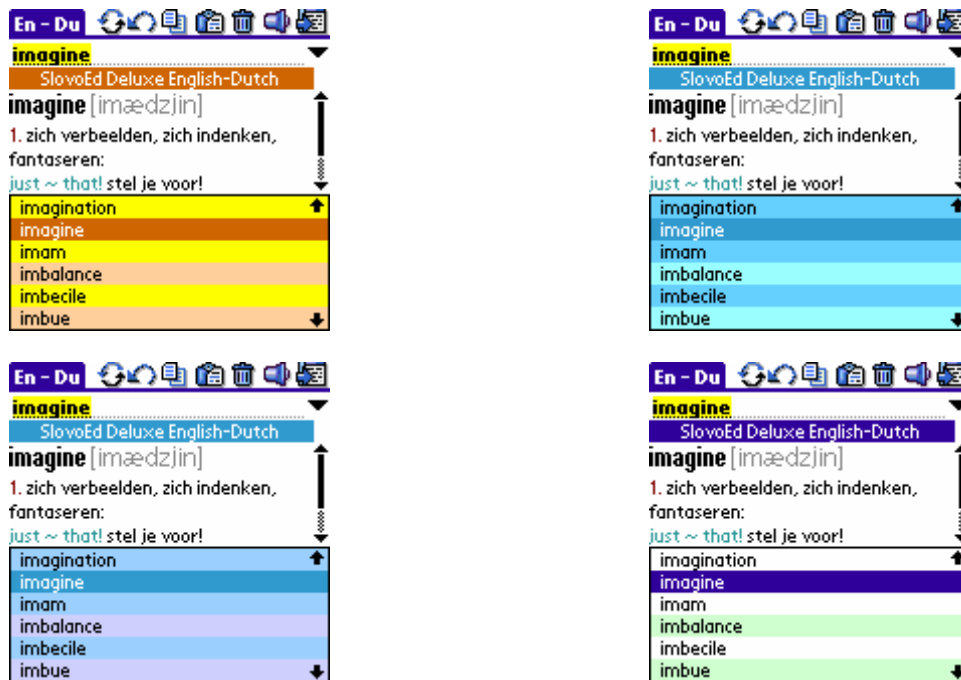
Contents

Contents	2
About Merriam-Webster	4
What is new in Merriam-Webster	4
Main features of Merriam-Webster dictionaries	5
Language versions of Merriam-Webster	6
Demo - version limitations and registration	6
Installation	6
How to use Merriam-Webster	9
Getting Started	9
Input methods	9
Morphology Module	10
Program Interface	11
Dictionary menu	12
Menu in the main window	12
Edit Menu	13
Options menu	14
Common Options	14
Resident Options	14
Word of the Day Options	15
Full screen mode	16
View	16
Edit	16
Resident mode	16
Resident. Interface elements	16
Resident menu	17
Dictionary menu:	17
Learning language with Merriam-Webster	17
Table of irregular verbs	17
Flash Cards Quiz	18
Word of the Day	18
How to create user's dictionary	19
Adding/Editing entries	19
Moving of the dictionary files	19
Moving dictionary databases to the storage card	20
Moving the dictionary engine and dictionary databases to the storage card	20
Uninstallation	20
Useful information	21
How to purchase the program	21
E-Care	21

Support Knowledge Base.....	21
Appendix: Sound module. Installation and usage	22
Sound Module. Demo-version limitations and registration.....	22
Sound module. Installation	22
Sound module. How to use it.....	24
Sound in the main window.....	24
Sound in the full-screen mode.....	24
Sound in the Resident.....	24
Sound Module. Uninstallation	24

About Merriam-Webster

Merriam-Webster is a well-known set of products developed by **Paragon Software (SHDD)** for popular mobile operating systems such as Palm OS, Pocket PC/ Windows Mobile, Windows Smartphone and Symbian OS. High data compression ratio for dictionaries and high retrieval rate are available thanks to the special technology developed by Paragon Software (SHDD). The advantages of our software are intuitive user interface and the wide range of tools that are provided by the dictionary engine.



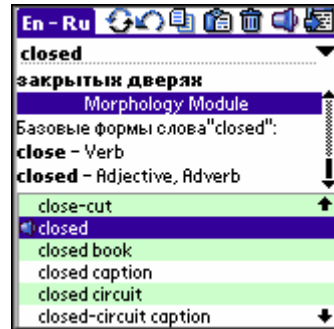
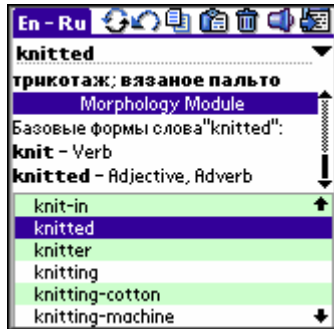
What is new in Merriam-Webster

We develop our dictionaries according to users' needs and the constantly growing functionality of the mobile devices. Several new functions have appeared in **Merriam-Webster for Palm OS** making your work more convenient:

Morphology Module (for English and Spanish languages)

Now you can get the translation of the words entered in free form. (For example, if you use plural nouns and adjectives, different verb form etc.)

This powerful feature allows you to work with foreign texts more efficient (especially, if you use Merriam-Webster in Resident mode) and it can be useful for both who have just started learning foreign languages and for experienced linguists.



Main features of Merriam-Webster dictionaries

The new version of **Merriam-Webster** has more language learning functions:

- **Flash Cards Quiz**

It is convenient and powerful tool for learning new words that you find in translation process.

- **Word of the Day**

You can learn the new words without working with translations often. Every day a word is chosen from the dictionary randomly and shown to you once a day or on every start of the program depending on the settings.

- **Table of American English irregular verbs**

A table of irregular verbs with several sorting options is now available (only for English language).

Ability to sort the verb forms in alphabetical order allows you to get all the verb forms if you know only one of them.

- **Sound Module**

You can listen to the words pronunciation if an appropriate Sound Module is installed (see also “**Sound module. Installation**”).

- **Built-in dictionary entries editor**

Sometimes, you may need to add or modify some information in your dictionary's entries. With the Merriam-Webster built-in editor, you can add new entries, remove and edit existing ones, activate/deactivate all entry changes, and synchronize your changes with a desktop computer.

- **Several colures schemes**

You can personalize your dictionary by choosing one of the available color schemes.

- **Resident module**

The resident module provides any word explanation in any application you are running without switching directly to the Merriam-Webster dictionary.

- **Search history**

Your last 20 queries are saved in the history – you can come back to them at any time.

- **You can install Merriam-Webster to the storage card**

You can save the device main memory by installing the program on any device supported memory card.

- **Word transcription**

Besides the word spelling and its description Merriam-Webster dictionaries contain the most authentic American English words transcriptions.

- **Full-screen translation entry representation**

Merriam-Webster definitions are extremely informative, and can also be exhaustive in length. To get all the information you need, use the full-screen mode of the dictionary.

Besides, with **Merriam-Webster** you get:

- high retrieval rate
- ability to install several dictionary databases at once
- amount of dictionary entries
- quick switching between dictionaries
- convenient visual layout and multicolor formatting of word entries, hyperlinks between entries
- ability to get the translation of any word in the dictionary entry just double tapping it

All those features make the navigation through the dictionary easier and provide convenient user interface of the program.

Language versions of Merriam-Webster

We can offer you the numerous explanatory, thesaurus and bilingual dictionaries. For English speaking customers the following dictionaries can be useful:

Explanatory
French-English-French
Spanish-English-Spanish

Please visit our web site to get more information <http://www.mobile-webster.com>

Demo - version limitations and registration

The more you use an unregistered dictionary, the more you get the registration reminder message instead of translation.

To register the dictionary, choose menu **Options>Register** and enter the registration code. (see also "**How to purchase the program**")

Installation

You can install the dictionary engine and the dictionary databases to the main memory of your device or to the storage card.

We recommend you to install the dictionary engine to the main memory, and the dictionary databases to the storage card. It helps you to use main memory reasonably and provide fast speed working.

You can also move the dictionary engine or the dictionary databases to the storage card after the installation.

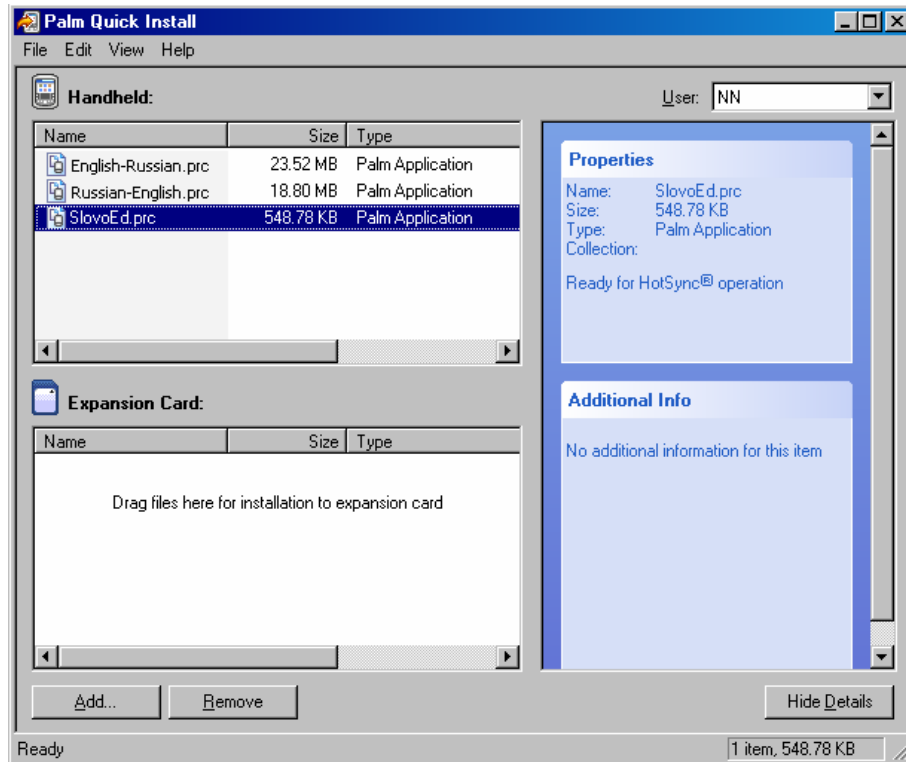
To install the dictionary, please do the following:

1. If you have the previous version, you should uninstall it.
2. Unpack zip-package on the desktop computer. You will find the installation files inside.
 - **the dictionary engine** (*.prc).
 - **dictionary databases** (two files for bilingual dictionary and one file for one-direction dictionary). For example, if you want to install a bi-directional English-French dictionary, you will need 2 files: English_French.prc and French_English.prc.
 - **Morphology Module** (Morphology_English.prc, Morphology_Spanish.prc)
3. Double-click on each of the *.prc files, or start **Palm Desktop** and choose the **Quick Install** item in the **Palm Desktop** window.
4. The **Palm Quick Install** window will appear. To install the dictionary into the main memory, move the dictionary files to the **Handheld** field. If you want to install the program to the storage card, move the files to the **Expansion Card** window. You can also use the **Add** button to move the file to the necessary field.



ATTENTION!

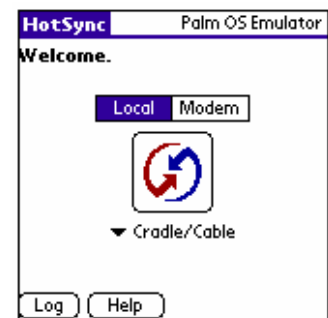
Install the **Morphology** module to the main memory for reasonable work.



NOTE

The illustrations show the interface of Quick Install 1.0. Your program can be different from it.

5. Establish connection between your smartphone and desktop computer, using HotSync program. For that open HotSync at your device and press the icon in the screen middle.



6. When installation is finished, the Merriam-Webster icon should appear in the application window.



You can move the dictionary files from the main memory to the storage card after the installation. (See also “**Moving of the dictionary files**”).

How to use Merriam-Webster

Getting Started

Run **Merriam-Webster** by double click. You can also run the dictionary by pressing a hardware button.

To run **Merriam-Webster** by hitting the hardware button choose **Prefs>Personal>Buttons**. Choose **Merriam-Webster** in drop-down menu next to the button. Press **Done** to complete this procedure.

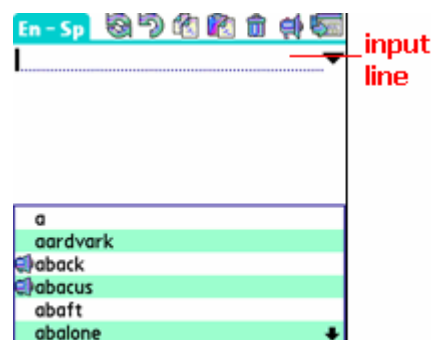


NOTE


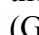
Merriam-Webster has a **Resident mode**. The resident module provides any word explanation in any application you are running without switching directly to the dictionary. For example, you can initiate the dictionary while working in Memo Pad. (see also “**Resident mode**”).

Input methods

Type the word in to get its translation (or interpretation).



You can use the following input methods:


1. **Graffiti**. To change the layout tap the layout indicator (**ENG**) under the input line or use the following Graffiti strokes:  (Graffiti 1),  (Graffiti2).

NOTE

Gesture is a graphic element, which is implemented by stylus on the device screen and is taken by program as the corresponding command.

2. **Onscreen keyboard or portable keyboard**

3. Paste operation

To paste the text from clipboard use the **Edit** menu, a special Graffiti stroke or the **Paste** button  at the top of the screen.

In the case if the entered word or its base form is in the dictionary you will see its translation. (see also “**Morphology Module**”).

Morphology Module

The built-in morphology module for English and Spanish languages will help you to find translation even if the search words appear in different grammatical forms

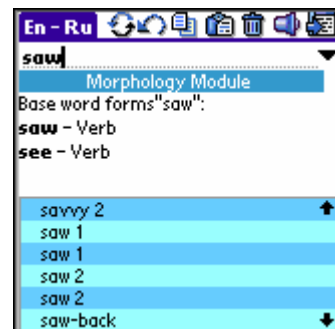
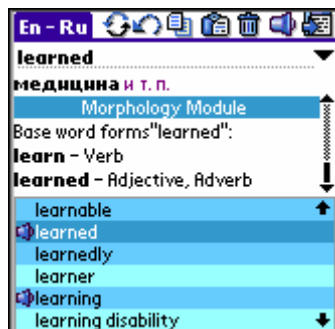
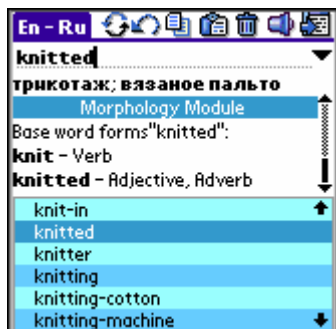
NOTE:

Install **Morphology Module** in the main memory for its reasonable work.

Merriam-Webster Morphology Module is supported only on the devices based operational system equal to or later than Palm OS 5.0

When you search for the word translation entered in free form you get its translation, if it is in the dictionary, and all the base forms found in the **Merriam-Webster Morphology Module** for entered word.

You can get the translations of found base forms (if they are in the dictionary) just double tapping it by stylus.











If there is no word translation in the dictionary and the base forms are found in the **Morphology Module** you will see only the list of found base forms.

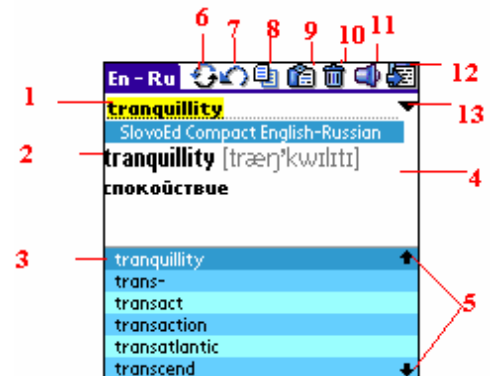
If one base form is found you will see its translation and the way of word-formation.

The most of the words occur in the text in free form. So the Morphology Module allows you to use the Resident Mode of the dictionary more effective when working with foreign literary and will be useful for those users who have just started learning language

Program Interface

Main window

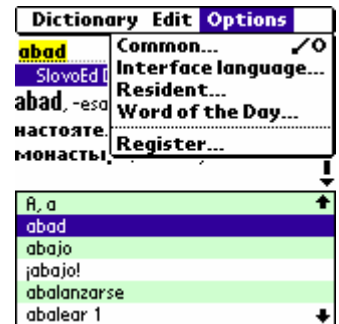
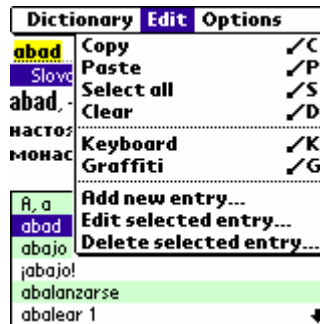
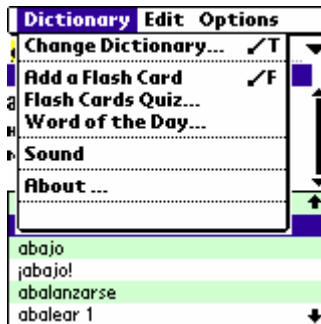
1. **Input line.**
2. **Dictionary entry.** You can maximize the dictionary entry using the button 12. The formatting of the entry varies in different dictionaries, but usually grammatical information is **blue**, set expressions with the word are **green**; the translation is black, the phonetic transcription is **grey**.
3. **Titles of the parts in the entry.**
4. **Word list**
5. **Wordlist scrollbar.** You can also use Up/down hardware buttons to scroll the wordlist.
6. **History button.** Tap the downwards pointing arrow to view the list of 15 previous queries.
7.  **Switch dictionaries** icon switches to the reverse dictionary (for example, if you are reading an entry of an English-Spanish dictionary, tapping this button will switch the dictionary to the Spanish-English dictionary).
8.  **Back.** Returns to the previous entry.
9.  **Copy.** Copies the selected word into the clipboard.
10.  **Paste.** Pastes the text from clipboard into the input line.
11.  **Clear.** Clears the input line.
12.  **Sound.** Allows you to listen to the pronunciation of the word this option is available only if the Sound Module is installed and the pronunciation of the selected word is present in the Sound Module For details see “**Appendix: Sound module. Installation and usage**”.
13.  **To the full-screen mode.** To leave the full-screen mode and minimize the entry window press the button in the upper-right corner .



Dictionary menu

Menu in the main window

The dictionary menu has three sections: **Dictionary**, **Edit**, **Options**.



Dictionary menu

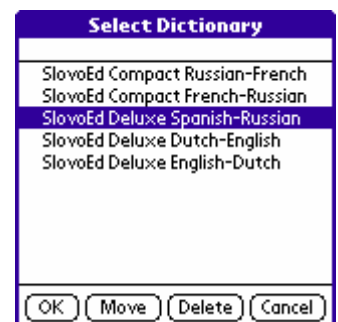
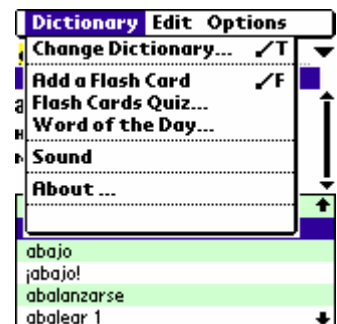
This menu gives access to several important functions and all options of the dictionary such as:

- **Change dictionary**

Choose **Dictionary>Change dictionary** to change the current dictionary, if more than one dictionary are installed on your device.

Besides, you can move the dictionary databases to the storage card or delete a dictionary database.

If the dictionary databases are located in the storage card, the program will be loaded more slowly if they are located in the main store.



ATTENTION!

When you move (or remove) one dictionary, the reverse dictionary will also be moved (removed). For example, if you delete an English-French dictionary, the French-dictionary will be deleted too.

You can also switch the dictionary by several ways:

1. You can switch the dictionaries by switch button;
2. If you type in a word in another layout when working with a dictionary, the program will automatically switch to the reverse dictionary.
3. The program switches to the reverse dictionary when you change the Graffiti language layout, and vice versa: the Graffiti layout is changed automatically when you change the dictionary.

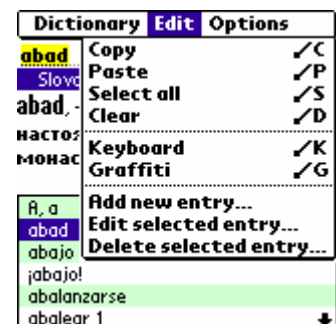
Many words in the dictionary entry are hyperlinks. Therefore, when you tap a word from the translation field, the program begins to search for this word in the reverse dictionary.

- **Add a Flash Card.** This item allows you to save a word to a flash cards for studying (see also “Flash Cards Quiz”)
- **Flash Cards Quiz.** This menu item allows you to start the flash Card Quiz (see also “Flash Cards Quiz”).
- **Irregular verbs.** This item opens the table of irregular verbs (see also “Table of irregular verbs”).
- **Sound.** This item allows you to listen to the pronunciation of the current word (provided that the Sound Module is installed on your device and it contains the necessary sound entry).
- **About.** Here you can get the information about the active dictionary, the number of entries it contains, and learn more about the Sound Module.

Edit Menu

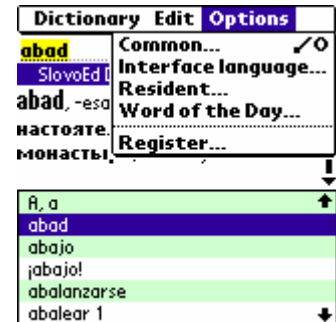
This menu section allows you to do the following functions:

1. **Copy.** Allows you to copy the selected text into the clipboard.
2. **Paste.** Pastes the text from the clipboard into the input line.
3. **Select All.** Selects the text in the input line
4. **Clear.** Clears the input line.
5. **Keyboard.** Opens the onscreen keyboard.
6. **Graffiti.** Opens the Graffiti help.
7. **Add new entry.** Creates a new dictionary entry (see also “Adding/Editing entries”).
8. **Edit selected entry.** Allows you to edit the current entry (see “Adding/Editing entries”).
9. **Delete selected entry.** Deletes the current entry.



Options menu

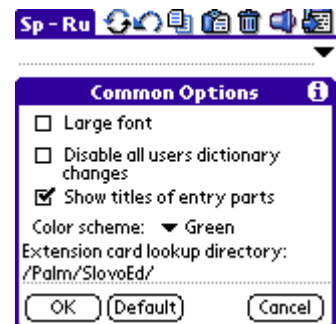
Choose this option to change the dictionary settings or register a dictionary (or a Sound Module).



Common Options

Choose **Options>Common** to use the following functions:

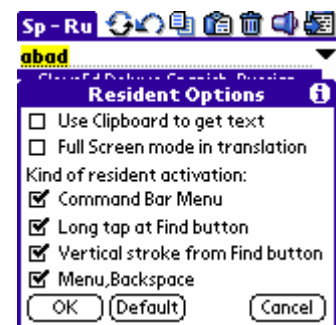
1. **Large font.** Please activate this option to increase readability or deactivate it to see more content.
2. **Disable all users dictionary changes.** You can disable all changes you have made in the dictionary. You will see the entries as they were without your changes.
3. **Show titles of entry parts.** Adds titles to entry parts (to translation and morphology reference).
4. **Color scheme.** You can choose a color scheme for the list of dictionary words and history.
5. **Extension card lookup directory.** This function is only used for atypical database installation (without Palm Desktop synchronization program). Please specify path to dictionary database on the extension memory card.



Resident Options

The Resident module is the part of **Merriam-Webster** that allows you to translate words without exiting an active application. For details, see “**Resident mode**”.

- **Use clipboard to get text.** The clipboard is necessary for the normal work of the Resident module with some applications., such as Mail, AvantGo, Blazer, WebClipping), WordSmith, DocumentsToGo.
- **Full Screen mode in translation.** The translation of the word that you look up in the Resident mode will be shown in the full screen.



This option makes the work of the Resident possible in those applications. Attention: the information that had been in the clipboard before you invoked the Resident can be lost.

- **Kind of resident activation.** You can use one of the following methods to invoke the Resident:
 1. **Command Bar** menu. You should draw the ✓ stroke in the Graffiti area of your device and choose the dictionary icon on the panel.
 2. Tap-and-hold the **Search** button on the Graffiti area. If you tap on this button, the standard Palm OS search window will appear, and when you tap-and-hold this button, the Resident will be invoked.
 3. Vertical stroke from the **Search** button to the **Prefs** button in the Graffiti area.
 4. Menu+BackSpace. Tap the **Menu** button in the Graffiti area and draw the Backspace stroke (→).

NOTE:

If your mobile device has not Graffiti area (for example, Handspring Treo 600, PalmOne Treo 650, PalmOne Tungsten W), the only way to initiate the Resident is Menu+BackSpace.

Word of the Day Options

You can choose Word of the Day options such as:

1. **Show Word of the Day.** Each day a word will be chosen at random order from the dictionary and shown at the start of the program. When this option is disabled, the Word of the Day will not be shown.



2. **Postpone till the next day.** If you do not turn your device on for several days, the words will be collected. (For example, if you turn on your device after two weeks of absence, you will be able to view 14 words of the day.)
3. **Show on every start.** The Word of the Day will be shown each time you run the dictionary.

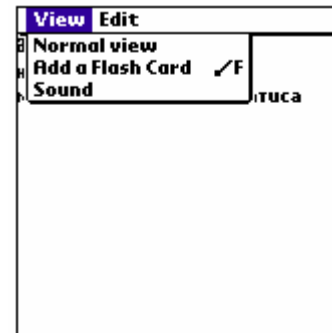
You can also choose the dictionary from which the Word of the Day will be chosen.

Full screen mode

This menu consists of two sections: **View** and **Edit**.

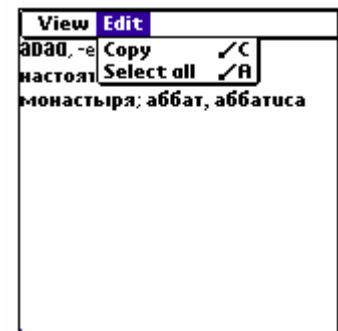
View

1. **Normal view.** Select this item to return to the main window of the dictionary.
2. **Add a Flash Card.** Select this item to save the word to a card for studying.
3. **Sound.** You can listen to the word pronunciation.



Edit

1. **Copy.** Allows you to copy the selected text into the clipboard.
2. **Select All.** Selects all text in the dictionary entry.







Resident mode

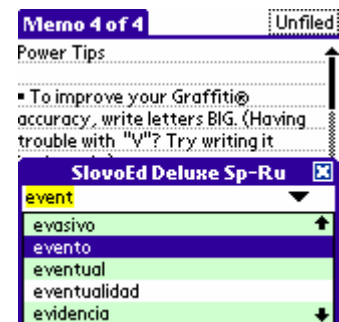
Resident mode (Resident) provides any word explanation in any application you are running without switching directly to the dictionary.

To get the word translation you should initiate it using one of the methods described in the section “**Resident Options**”. The Resident window will appear in the bottom of the screen. If the word you are looking for is present in the dictionary, you will see its translation. Otherwise, the words that are close to this word in the dictionary list will be shown. (see also “**Morphology Module**”).

Resident. Interface elements

The Resident window has the following functional parts:

-  **Close Resident window button.**
-  **To the wordlist button.** Tap the arrow  in the bottom-right corner to open the wordlist on the resident window. If you want to view the translation of a word from the wordlist, tap this word.
-  **Sound icon.** Tap this icon to listen to the pronunciation of the word.

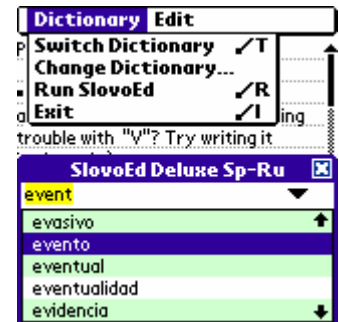


Resident menu

The Resident menu has two sections: **Dictionary** and **Edit**.

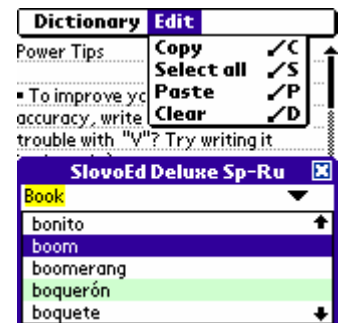
Dictionary menu:

1. **Switch dictionary.** Switches the dictionary to the reverse.
2. **Change dictionary.** Allows you to select the dictionary from the list of the installed dictionaries.
3. **Run M-W.** Allows you to open the dictionary in the standard mode.
4. **Exit.** Closes the Resident window.



Edit menu:

1. **Copy.** Copies the selected text into the clipboard.
2. **Select All.** Selects all text in the dictionary entry.
3. **Paste.** Pastes the text from the clipboard into the input line.
4. **Clear.** Clears the input line.



The settings of the **Resident** are available in main window menu of **Merriam-Webster** (see also “Resident Options”).

Learning language with Merriam-Webster

Merriam-Webster dictionaries are the language-learning standard in America, and “Word of the Day”, “Flash Card Quiz” and “Table of irregular verbs” help you maximize these English-learning features on your mobile device.

Table of irregular verbs

Choose **Dictionary>Irregular verbs** to see the list of irregular verbs (only for English). Tap the column heading to change the sorting order of the words: alphabetical/reverse alphabetical order. Thus, even if you know only one form of the verb, you will be able to find the other forms quickly.

Tap any of the forms to see the dictionary entry for the verb.

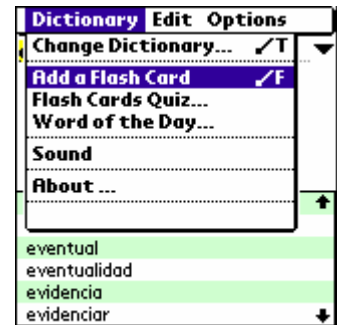
Irregular Verbs		
Inf.	Past	P.Part.
abide	abode	abode
	abided	abided
arise	arose	arisen
awake	awoke	awaked
	awoke	awoke
backbite	backbitten	backbitten
backslide	backslid	backslid
be	was	been
	were	
bear	bore	born

Flash Cards Quiz

It is convenient and powerful tool for learning of new words that you find in translation process.

If you want to add a word to a card choose **Dictionary>Add a Flash Card**.

You can also add a Flash Card using the menu in the Resident.

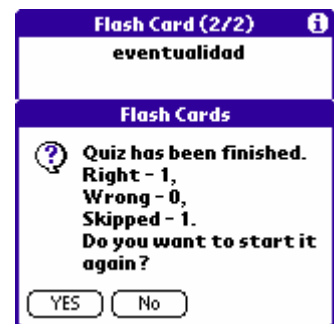


If you want to pass the test choose **Dictionary>Flash Cards Quiz**. When you start **Flash Card Quiz**, try to remember the translation of the word. To check if the translation you have recalled is right, tap the centre of the screen and then compare the right translation with given by you. Press Right or Wrong. To turn to the next card press “**Next Card**”. After completing the test, you can see your results.



Your results will be saved and shown to you: the number of right translations, the number of wrong answers, the total number of cards shown and the number of learned words.

The program saves statistics for several quizzes and if you often successfully recall the translation for a certain word, this word is marked as “learned” and will not be included in the quiz any more.



In the Flash Cards Quiz there is the **Card** menu. It allows to: delete the current flash card or delete all cards.

Word of the Day

Word of the Day is another word-learning option of the program. Each day a word is chosen randomly from the dictionary and shown on the start of the program. If you tap **Close**, the Word of the Day will be dismissed. If you tap **Add to cards**, the word will be saved to a Flash Card. **Word of the Day** gives you an opportunity to learn a new word each day without having to select it from the dictionary wordlist.

The options of this feature can be set in the **Options>Word of the Day options** (see also “**Word of the Day**”)



How to create user's dictionary

We advised you to create your own dictionary if you use the specific terms often. It helps you to work more efficiently. Use Built-in dictionary entries editor to create your own dictionary.

Adding/Editing entries

You can modify the dictionary databases of the **Merriam-Webster** program by adding new entries or editing the existing entries.





The procedure of adding an entry is similar to the procedure of editing an entry. The only difference is when you add a new entry you will be prompted to type in the entry title before you proceed to the window where you can edit the text of the entry.

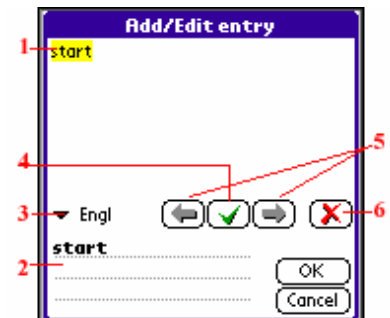
Choose **Edit>Add new entry** to add a new entry. To edit an existing entry choose **Edit selected entry**.

If you are adding a new entry, a window will appear where you should enter the title of the new entry.



The Edit entry window has the following functional parts:

1. The entry preview area.
2. The Edit field, where you can modify an element (an element is a part of text with the same style).
3. The list of styles that can be applied to the elements of the entry.
4.  **Apply** button. After editing an element tap this button to apply the selected style.
5.   The buttons which allow you to move between the elements of the entry.
6.  **Delete** button. Tap it to delete an element.



Tap **Save** to save the entry, or **Cancel** to return to the dictionary.

If you want to switch off all user changes, choose **Options>View** and checkmark **Disable all users' dictionary changes**.

Moving of the dictionary files

We recommend you to install the **Merriam-Webster** dictionary engine to the device main memory and the dictionary databases to the storage card. This will help you to use device memory reasonable. You can also move the engine or the dictionary databases to the storage card after the installation. The process of program files moving is described in this section.

Moving dictionary databases to the storage card

To move the dictionary databases to the storage card, please do the following: Choose **Dictionary>Change dictionary**. Then tap **Move** to move the dictionary.

If the dictionary databases are located on an extension card, the program will be loaded more slowly than when they are located in the main memory.



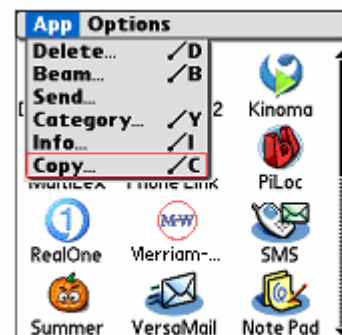
ATTENTION!

When you move one dictionary, the reverse dictionary will also be moved (deleted). For example, if you delete an English-French dictionary, the French-dictionary will be deleted too.

Moving the dictionary engine and dictionary databases to the storage card

To move the **Merriam-Webster** dictionary engine together with the dictionary databases to the extension card, do the following:

1. Deactivate the Resident module: open the menu of the dictionary and select **Options>Resident>Kind of resident activation**. Then uncheckmark all the activation methods. You can also restart your device 2 times to deactivate the Resident.
2. Open the menu in the application window and select **Copy** in the **App** section.



Select **Merriam-Webster** in the list of applications and press **Copy**.

ATTENTION!

*If **Merriam-Webster** dictionary engine is located on the expansion card, it will not be possible to use the Resident module.*

Uninstallation

1. Deactivate the Resident module: open the menu of the dictionary and select **Options > Resident>Kind of resident activation**. Then uncheckmark all the activation methods. You can also restart your device two times to deactivate the Resident.
2. Tap the Home icon on the Graffiti area to open the applications window.

3. Open the menu and select **App>Delete**. Select **Merriam-Webster** in the list of applications and tap **Delete**.
4. To delete the dictionary databases select them in the list and tap **Delete**.

Useful information

How to purchase the program

Visit our web site <http://www.mobile-webster.com> and choose the dictionary you want to buy and press “Order”. There you will see the link to e-commerce system where you can complete you order.

E-Care

Each our customer can take advantages of E-Care system:

- download the current versions of purchased programs;
- get notifications about releases of new version of the program;
- get free updates of your programs;
- get the technical support immediately;
- restore your serial numbers in case of loss.

To get more information, please visit <http://penreader.com>

Support Knowledge Base

Support knowledge Base is available for our customers. You can find there detailed answers to frequently asked questions about the most popular programs of Paragon Software (SHDD).

Welcome to Support Knowledge Base!

<http://support.penreader.com/>

Customer Support Service

Tel: (+7 495) 789-67-17

NOTE

When calling from outside Russia, please consider the time shifts: Moscow is 11 hours ahead of San-Jose, 8 hours ahead of New York, 3 hours ahead of London, 2 hours ahead of Munich and Paris, 6 hours behind Tokyo.

Moscow office operation hours are from 11.30 till 19.00 by Moscow local time.

Appendix:

Sound module. Installation and usage

Most of dictionary databases used with **Merriam-Webster** dictionary engine provided phonetic transcription. Now you can also listen to pronunciation and improve your own pronunciation (the words are spoken by professional native speakers).

With these modules you can listen words pronunciation sounded by native speakers. It is essential feature for language learners. For the information about **Merriam-Webster** dictionaries for Palm OS, please visit our site: <http://www.mobile-webster.com>.

Sound Module. Demo-version limitations and registration.

The more you use an unregistered sound module, the more you get the registration reminder message instead of pronunciation. You have enter the registration code to get rid of these limitations. You will get this code by e-mail after purchasing. To register the Sound Module choose **Options> Register** and enter the registration code for the Sound Module.

Sound module. Installation

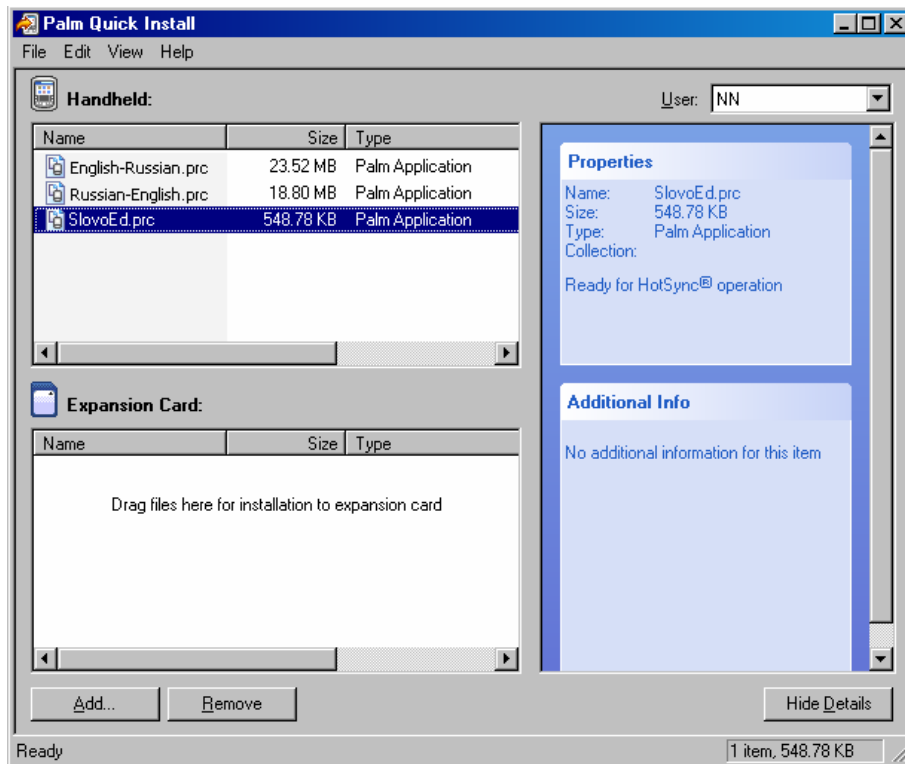
ATTENTION!

- Sound Module is not supported on the devices with operational system earlier than Palm OS 5.0, and also on the Sony Clie and Zire 22 devices.
- Sound Module may not function correctly in case it is installed into the main memory of your device (it depends on individual features of some devices). Due to this fact, we do recommend to install Sound Modules on expansion cards.
- Sound Modules will function only with the latest versions of the dictionary engine – «Merriam-Webster 6.0» or « Merriam-Webster 2005». The Sound Module will not function with the versions of the dictionary engine earlier than Merriam-Webster 2005.

To install the Sound Module, please do the following:


1. Make sure that the dictionary is installed on your device. The installation of the **Merriam-Webster** dictionary engine is described in the section “**Installation**”.
2. Double-click on each of the *.prc file, or launch **Palm Desktop** and select the **Quick Install** item in the **Palm Desktop** window.
3. The **Palm Quick Install** window will appear. If you want to install the Sound Module into the main memory of your device (not recommendable), drag-and-drop the dictionary files to the **Handheld** field. If you want to install the Sound Module on an extension card, drag-and-drop the file to the **Expansion Card** window. You can also use the **Add** button to browse for the necessary file.

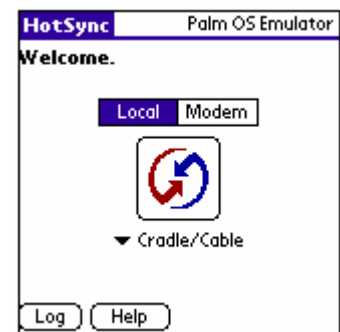




NOTE



The illustrations show the interface of Palm Desktop 4.1 and Quick Install 1.0. Your program can be different from it.

4. Synchronize your mobile device with your desktop computer using the HotSync program. To perform this operation you should connect the mobile device to the desktop computer, open HotSync on the mobile device and tap the icon in the center of the screen. When installation is finished, the sound module  icon should appear in the application window.




Sound module. How to use it

Sound in the main window

To listen to the word pronunciation, tap the sound icon  in the wordlist or the toolbar sound icon . Besides, you can choose **Dictionary>Sound** to listen to the pronunciation.





Sound in the full-screen mode

To listen to the pronunciation in the full-screen mode, tap the sound icon  next to the entry title.



Sound in the Resident

To listen to the pronunciation in the Resident mode, tap the sound icon  next to the entry title. If you are viewing the wordlist in the Resident window, tap the sound icon  in the wordlist.



Sound Module. Uninstallation

To uninstall the sound module you should uninstall the dictionary. To uninstall the dictionary engine do the following:

1. Disable the Resident module choose **Options > Resident > Kind of resident activation**. Then uncheck all the activation methods. You can also restart your device two times to disable the Resident.
2. Tap the Home icon on the Graffiti area to open the applications window.

3. Choose **App > Delete**. Choose **Merriam-Webster** in the list of applications and tap **Delete**. To remove the dictionary databases, choose those in the list and tap **Delete**.

Dear customers!
Your reports and comments are highly appreciated.
They help us to improve our programs quality.
Thank you in advance for your reports.